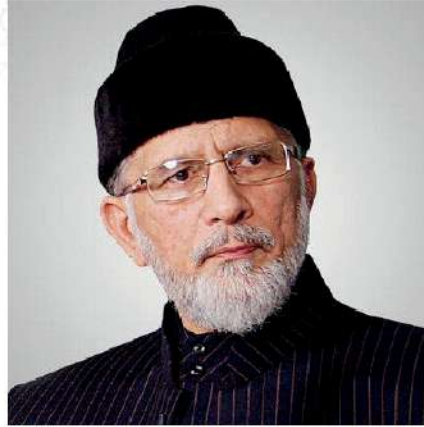




Nurturing
the *future*
Generation



Patron in Chief
Minhaj-ul-Quran International
Shaykh-ul-Islam
Dr Muhammad Tahir-ul-Qadri



Synopsis

Madinat al Zahra is a unique and inspirational project at the heart of a thriving community. The innovative project is one which was initiated by its parent body Minhaj ul Quran International which was founded in 1981 in Lahore, Pakistan, by Shaykh ul Islam Dr Muhammad Tahir ul Qadri.

Shaykh ul Islam has worked on many fronts and continues to do so to revive the culture of core Islamic and contemporary subjects. His audiences have ranged from professionals of various backgrounds including professors, politicians, government officials and students.

Women are a vital component in the vision of Shaykh ul Islam. They make up some of his staunchest followers and supporters globally, particularly given that he has fought and advocated for them on many fronts, in order to empower them and make them strong ambassadors and torchbearers within their communities.

As a result of Shaykh ul Islam's largely recognised and commended works, he has successfully developed a mass educational and philanthropic global movement. MQI presently operates in excess of 90 countries, actively promoting peace, interfaith harmony and cohesion, through educational programmes and dialogue.

مدينة الزهراء

Overview

Madinat al-Zahrā will have

4 key elements:

1. Iconic Mosque
2. Multi Purpose Hall
3. School with Boarding Provision
4. Retail Complex

Our **goal** is to **provide** the **community** with **beneficial facilities** including:

- Centre of deradicalisation
- House of Abraham- Interfaith dialogues
- Counselling and support services
- Leisure and recreational centre
- Educational and learning facility
- Legal advice bureau

Our Vision

Through this unique project in the UK we aim to set an example for other organisations to follow and to nurture the constantly changing needs of our coming generations so that we can guide them through religious and worldly understanding. Our Vision is to develop an iconic feature that is ergonomically designed, innovative and creative that will be appreciated by the community at large. Education and community engagement will be the focal point of this development. The centre of excellence hopes to offer a diverse range of educational and social programmes through the establishment of an iconic mosque, a community enterprise hub, a school and for sustainability, a retail complex.



Dr. Hassan Mohi-ud-Din Qadri

Chairman Minhaj-ul-Quran Int.
Supreme Council

The Madinat al Zahra project literally translates as the city of Zahra is based on the vision of Shaykh ul Islam Dr Muhammad Tahir ul Qadri. The project is a flagship overseas project of MQI which seeks to offer a diverse range of religious, educational and social programmes. It is based on the vision and ideology of Minhaj ul Quran International which advocates for peace, interfaith harmony and empowerment at all levels. The aim is to develop a modern and state of the art complex. Each key feature of the design is part of a larger narrative based around inclusion, empowerment, cleansing and purification. I pray for the success of the project.



Dr. Hussain Mohi-ud-Din Qadri

Deputy Chairman (BOG)
Minhaj University Lahore

Madinat al Zahra is to become one of MQI's biggest overseas projects. It will be geared to become a community hub where a sense of inclusion, co-existence and cohesion will be felt. MQI understands the importance of empowering, educating and equipping people with fundamental principles and knowledge to better society. Termed the Centre of excellence, there will be an opportunity for people of every age to acquire knowledge of both modern and classical sciences in a relaxed, peaceful and state of the art educational complex. I am extremely excited to be involved with this project and I pray for its success.



Muhammad Afzal Saeedi
Director Madinat al Zahra UK

"Madinat al Zahra is a unique project for Minhaj-ul-Quran International (UK) that will become a beacon of inspiration. The name is inspired by the city of the beloved Prophet Muhammad (PBUH) and his beloved daughter, Fatima al-Zahra. She is known as a caring mother, a humble daughter and wife, but also an embodiment of spiritualism, beauty, purification and light. She invokes the image of a blossoming flower. I hope this project similarly blossoms into a flower with its roots reaching and benefiting far and wide.



Mosque

The **development** of the **Islamic Institute** will include:

- Prayer facility for over **2600** worshippers
- Spiritual and contemplation room assigned for salutation
- Viewing mezzanine overlooking the sports facilities and mosque
- Exhibition and library room
- Ablution facilities with accessible WC
- Multiple kitchen and storage areas



Mosque

Our aim is to develop a modern and state of the art mosque incorporating a fusion of architectural designs from Middle East and combining these with British aspects so that it becomes an iconic landmark that embodies the union of cultures and religions.

Amongst many things,
**The Islamic
institute will
facilitate:**

- 5 daily congregational prayers
- Islamic study courses for all ages
- Higher level of Islamic education with an official qualification from Minhaj University Lahore
- Spiritual programmes
- Funeral services & mortuary

Interior design of mosque areas



Exterior design of mosque areas

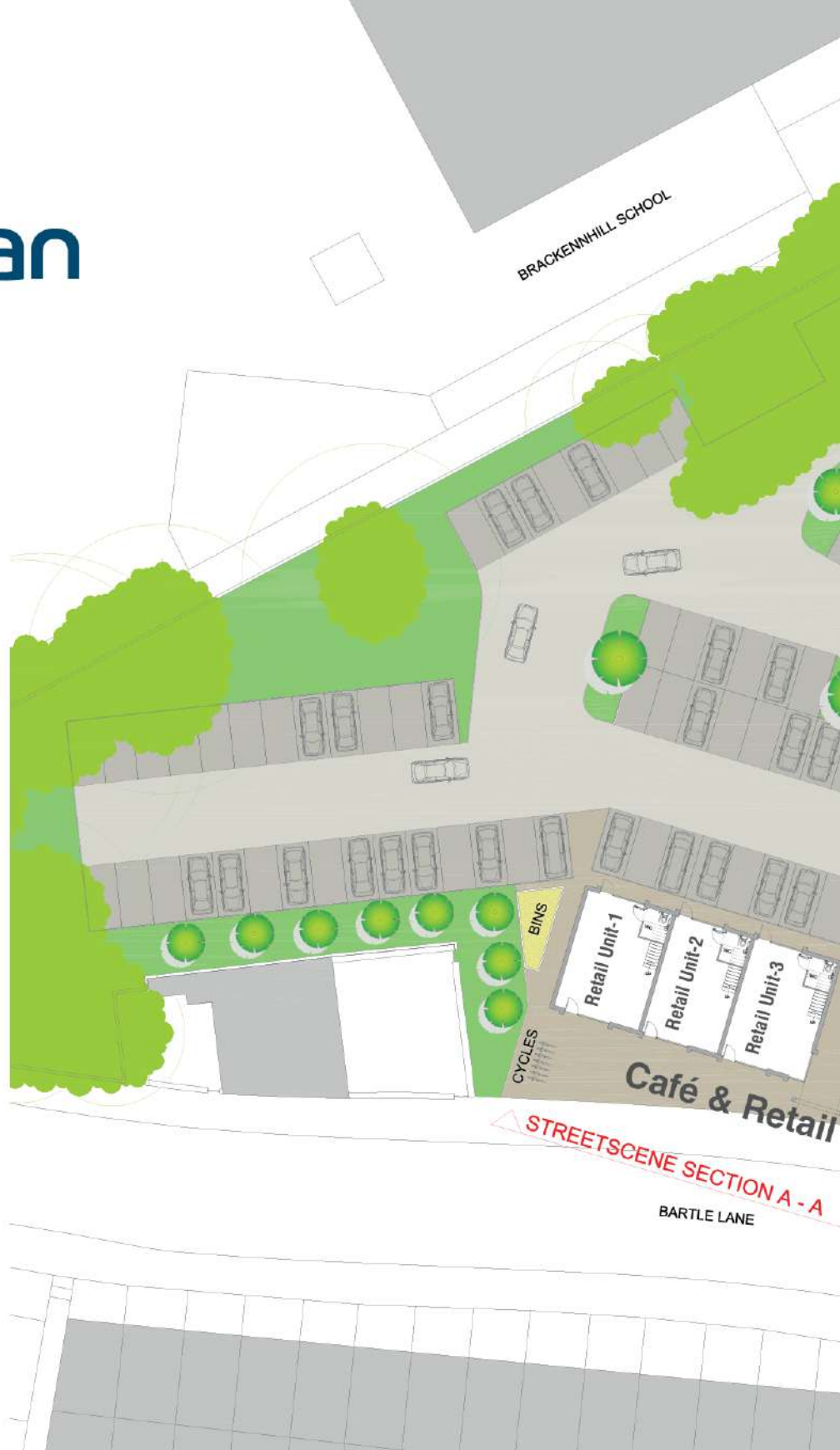




Master Plan

MASTERPLAN KEY

	CAR PARK - ROAD (TARMAC)
	CAR PARK - PARKING BAYS
	CIRCULATION PATHS
	CROSSINGS
	BINS (CONCRETE) BASE
	NEW TREE
	NEW LANDSCAPING
	EX LANDSCAPING CONSTRAINT
	205.00 PROPOSED LEVEL



OVERALL SITE AREA	0.825 Hect.
ACCESS ROAD	1,443 sq.m
PARKING BAYS	1,145 sq.m
PATHS	1,200 sq.m
LANDSCAPE	2,194 sq.m
MOSQUE & CENTRE (GFA)	4,254 sq.m
EDUCATION BLOCK (GFA)	1,395 sq.m
RETAIL BLOCK (GFA)	1,182 sq.m
PARKING SPACES	93

Project Completion
 Projected total cost of
£15,000,000



DRACUP ROAD

BINS

School with Boarding Provisions

Multi Purpose Hall

Family Entrance

Ladies office

Library

Mosque

Main Entrance

Reception

SCHOOL KITCHEN

DINING HALL

STAFF ROOM

Retail Unit-4

Retail Unit-5

Entrance

Café

BINS

SITE SECTION B - B

GREAT HORTON ROAD



Archi-Structure
 Lead Architect: Al Samarraie



Multi Purpose Hall

The centre will be used as a multi-purpose facility for the wider communities, hosting a diverse range of activities and promote community cohesion across all age groups. Located in the heart of Great Horton Village, we hope to establish a central hub to improve social interactions for all. The centre will focus on promoting the principles of personal development, wellbeing, community engagement, empowerment and social inclusion. At the heart of the community centre will be a centre of deradicalisation, a unique faculty, the first of its kind within Bradford. It will aim via a structured process to ensure the reintegration of people back into the society whilst combating violent extremism.

Aside from this there will be an interfaith faculty entitled 'The House of Abraham' which will promote interfaith dialogue. The 'House of Abraham' is a concept to bring interfaith communities together to create a stronger bond as well as mutual understanding between all religions. This hub will concentrate on creating a better, friendlier, and more inclusive atmosphere between religious groups and to then reflect this into society.



The centre hopes to offer beneficial facilities:

- Auditorium/Seminars
- Wedding & other celebratory functions
- Indoor Sports activities
- Counselling and support services
- Legal advice bureau
- Classes tailored to empower and meet women's needs
- Leisure and recreational facilities.





School with Boarding Provisions

We are very much focused upon developing the best educational outcomes to mirror our parent body Minhaj ul Quran International. Our mission is to prepare students to understand, contribute, and succeed in a rapidly changing society, and to make the world a better place.

We will ensure our students are provided with the competencies essential for success and leadership in an emerging creative economy. We aim to design approaches to study contemporary issues, such as urbanisation, sustainability, globalisation and much more.



The **educational facility** will be fully equipped to house **excellent teaching services** some of which **include:**

- Several multi-purpose classrooms
- External terrace rooms for student leisure
- IT suites
- School library
- Quiet study areas
- Kitchen and dinner hall
- A state of the art boarding facility for students



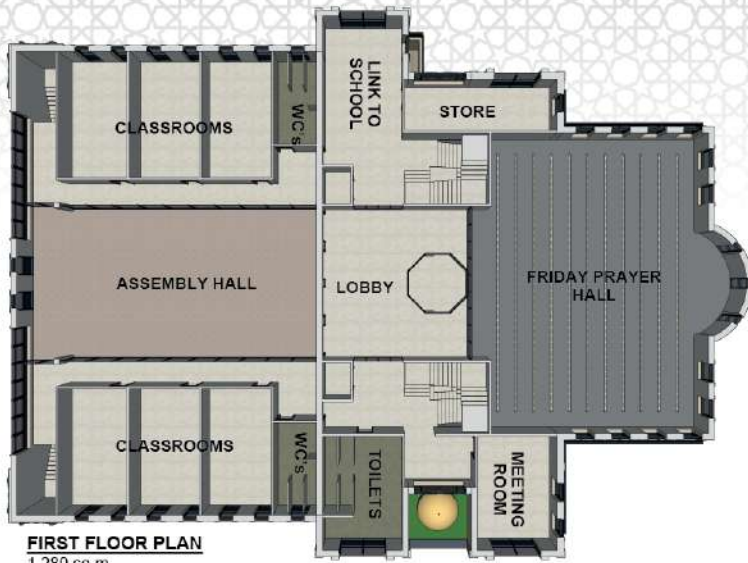


Café & Retail

We aim to create a unique café where customers can socialise with each other in a comfortable and relaxing environment while enjoying the best brewed coffee and pastries in town. At the heart of our operation will be our focus on helping our customers to relieve their daily stresses by providing peace of mind through great ambience, convenient location, friendly customer service, and products of consistently high quality.

Our **retail services** will consist of:

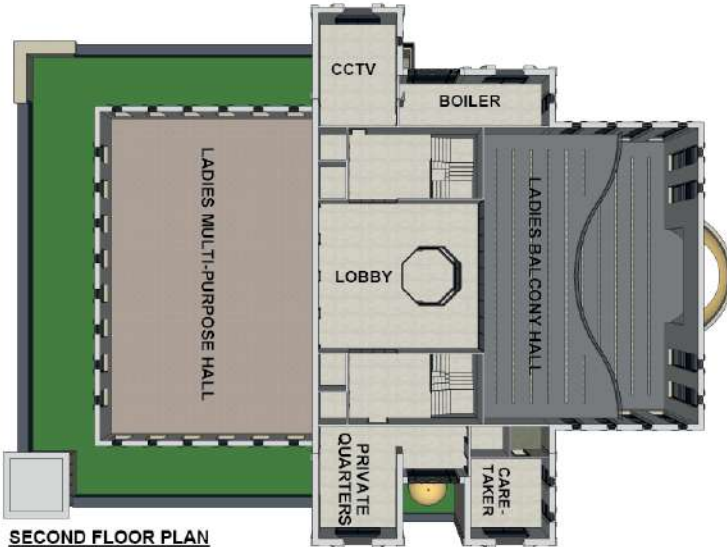
- Multiple retail units
- Minhaj radio station
- A recording studio and sound room
- Meeting and board rooms as well as office/admin space



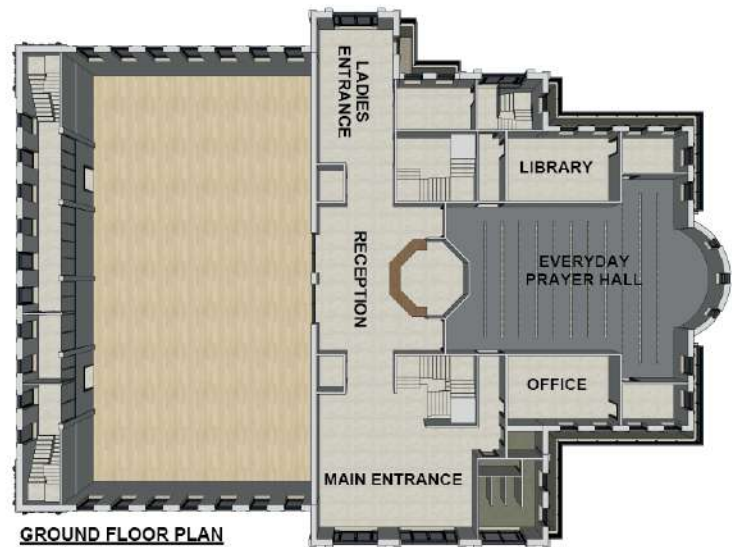
FIRST FLOOR PLAN
1,280 sq.m



BASEMENT PLAN
1,300 sq.m



SECOND FLOOR PLAN
885 sq.m



GROUND FLOOR PLAN
809 sq.m

We request for your kindness and generosity in supporting this project

Jazakallah

Account Name: Minhaj ul Quran International
Barclays Bank | Sort Code: 20-89-15 | Account Number: 43649881
SWIFTBIC: BUKBGB22 | IBAN: GB71 BUKB 2089 1543 6498 81



Madinat al-Zahra UK

Bartle Lane, Bradford, West Yorkshire, BD7 4QF
T: +44 (0) 333 023 2236 E: info@madinatalzahra.org

www.madinatalzahra.org

Registered Office 292-296 Romford Road
Forrest Gate, London, E7 9HD

Registered Charity:
England & Wales: 1102801 | Scotland: SC045860

